

Novasure Endometrial Ablation

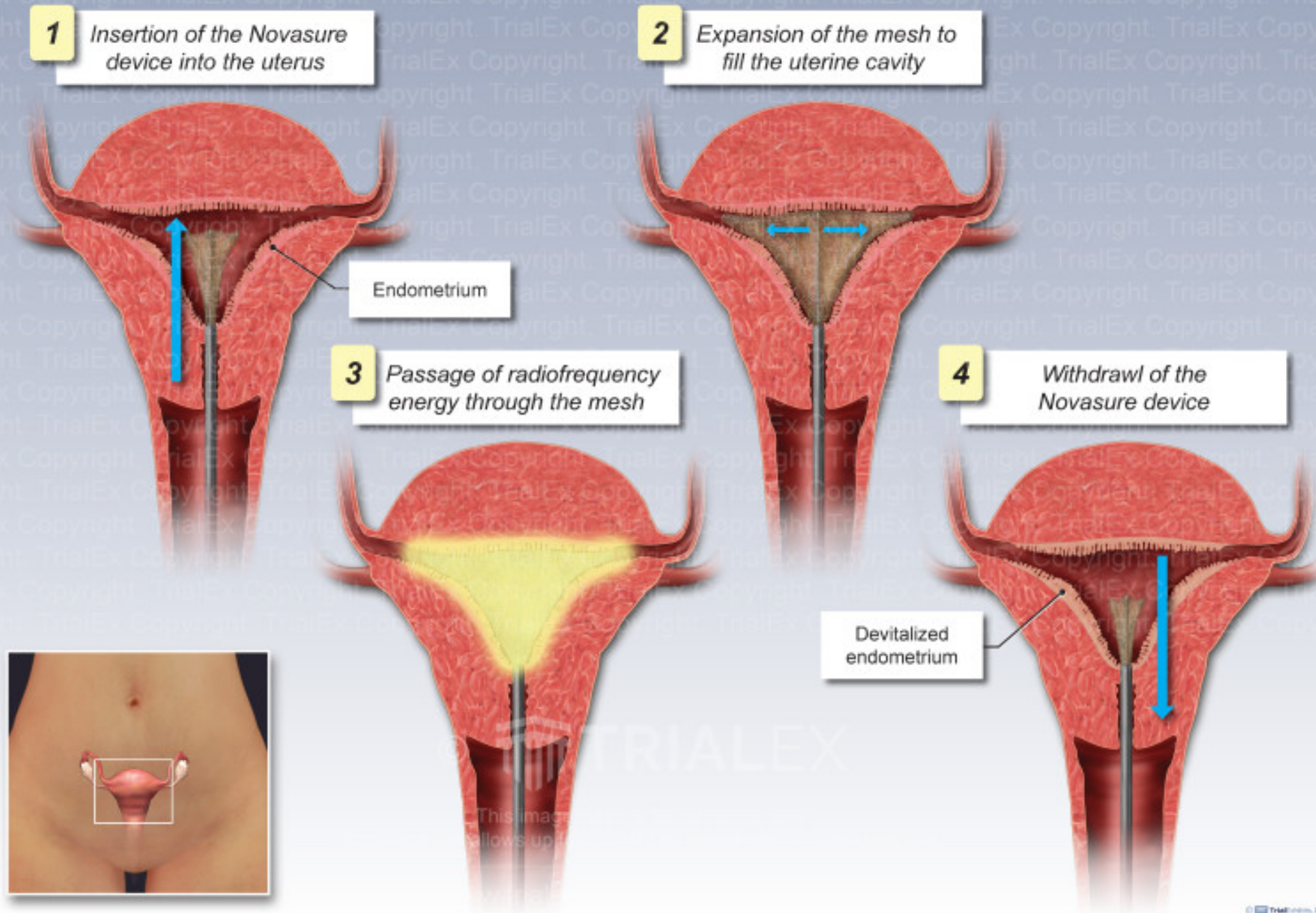


EXHIBIT ID: OB_C_0796

Novasure Endometrial Ablation

This illustration shows the anterior view of a uterus undergoing a Novasure endometrial ablation procedure. During this surgical procedure, the Novasure device is inserted into the uterus. Once inserted, the mesh of the device expands to fill the uterine cavity and a passage of radiofrequency energy is produced from the device that travels throughout the mesh. The Novasure device is then removed from the uterus and the endometrium is devitalized.

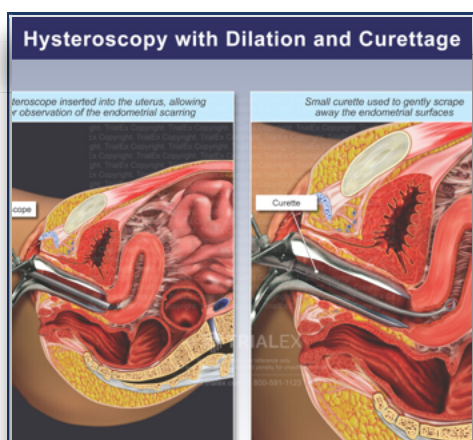
ADD TO COLLECTION

CONTACT US

- OB_C_0796
- NOVASURE
- ENDOMETRIAL
- UTERUS
- APPLICATOR
- ABLATION
- DEVICE
- UTERINE
- CAVITY
- ENDOMETRIUM

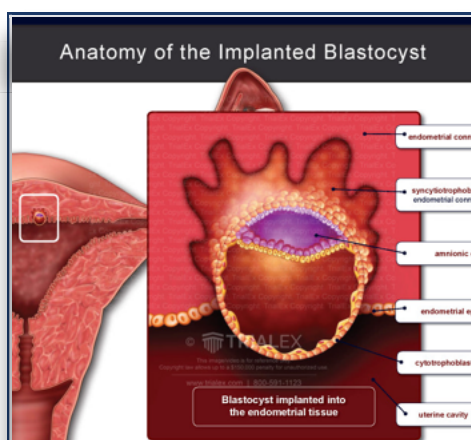


RELATED ITEMS YOU MAY BE INTERESTED IN



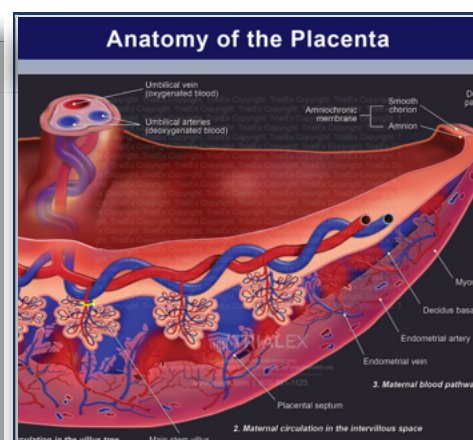
Hysteroscopy with Dilatation and Curettage

+ Add to Collection



Anatomy of the Implanted Blastocyst

+ Add to Collection



Anatomy of the Placenta

+ Add to Collection